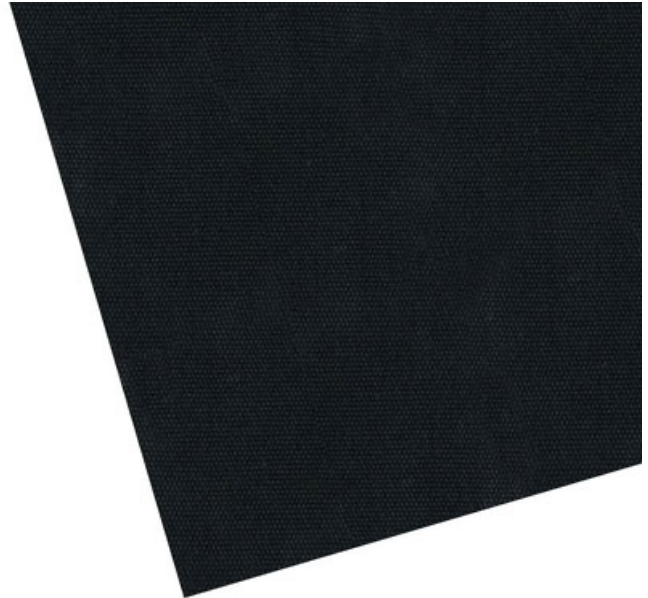
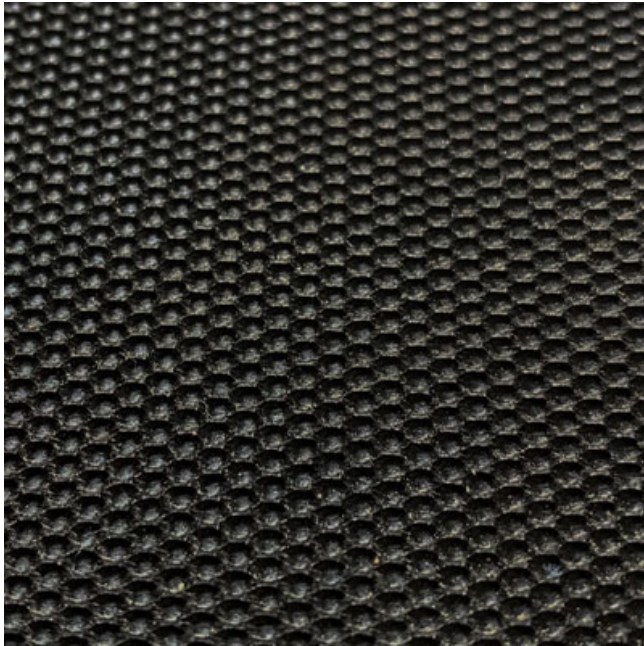


Equine Rubber Mats



Description

Our versatile and durable Ply Insertion Grip Rubber Mat is reinforced with a ply-net cloth to improve tear strength and stability. This mat provides a textured anti-slip surface with anti-fatigue properties to protect livestock from fatigue and injury caused by prolonged standing on hard surfaces.

The Ply Insertion Grip Rubber Mat is suitable for many uses, such as horse floats, breezeways, walkways, stable wall lining, vet rooms, wash bays, truck and ute trays.

Key Features

- Woven cloth insert for added tensile strength
- Textured surface
- Long length to reduce joints
- Easy to clean
- Its non-porous surface will not absorb or retain moisture and will not encourage bacterial or fungal growth
- 3 year lifespan based on normal use and condition
- Also available by linear metre

For easy online ordering and fast delivery Australia wide. Click below to order through our online store now.

Perfect for:

Livestock

Benefits

Slip Resistance, Suitable for wet areas, Hi Traffic, Outdoor Suitable

Uses

Indoor/Outdoor, Heavy duty, Livestock use



Full Rolls Sizes

2m x 10m Roll

Cut To Length

Can be cut to length

Colours Available

Black

Compound

10% natural, 90% reclaim rubber. Vulcanized rubber. Insert is a ply-net cloth.

Thickness

6mm

Weight

190kg