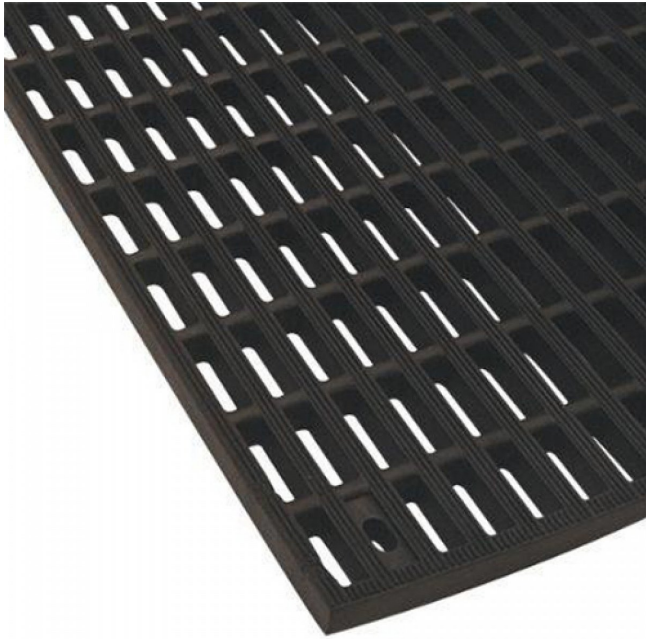


Stall Mats



Description

Excellent Anti-Slip surface can be loose laid wall to wall or glued on.

Absorbs shock and noise, protects hooves, floors and equipment.

High density natural rubber does not absorb or retain moisture and will not encourage bacterial or fungal growth.

Benefits

Slip Resistance, Suitable for wet areas, Hi Traffic, Outdoor Suitable

Standard Mat Sizes

1m x 1m Thickness: 16.5 mm